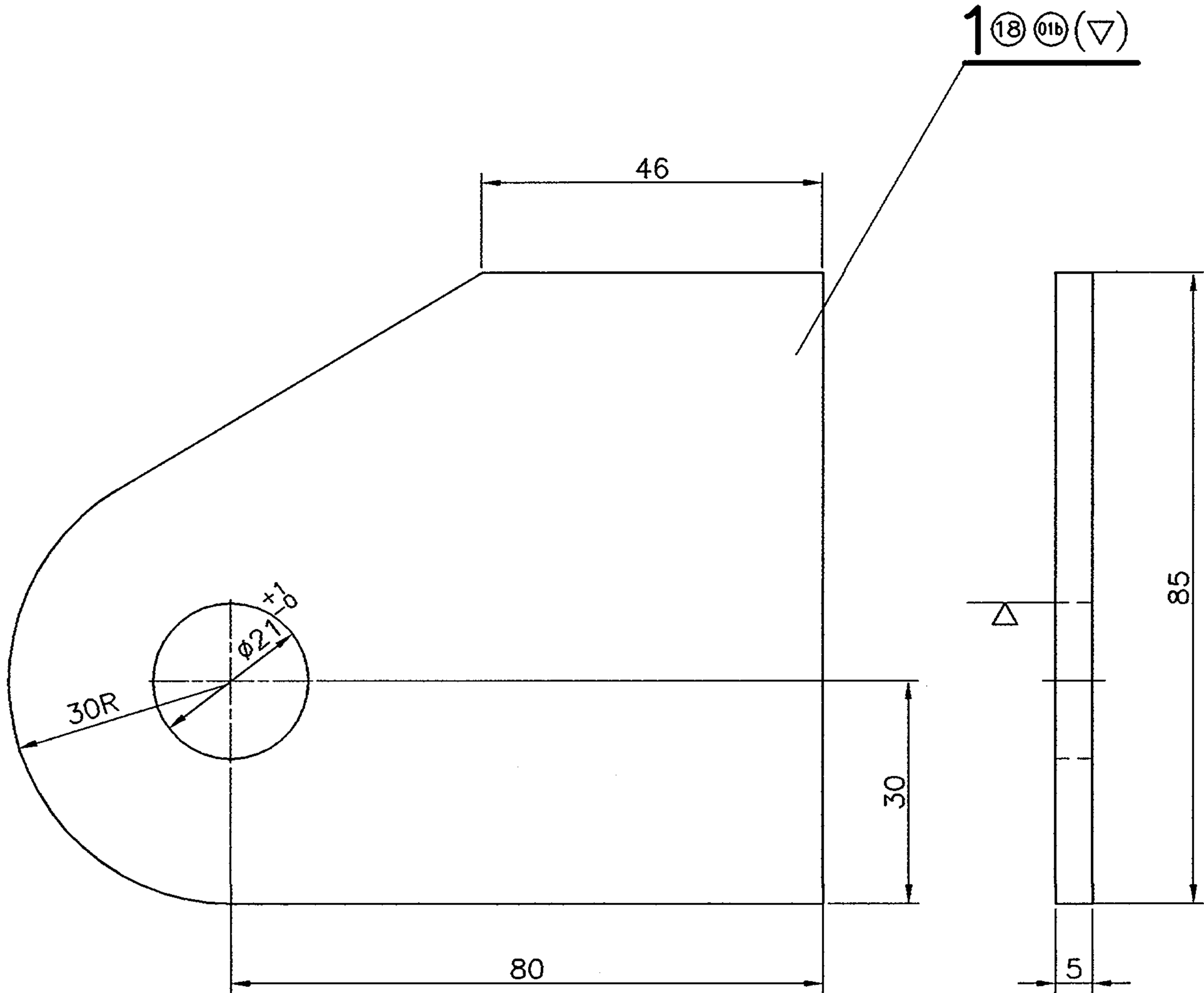


▽	ROUGH MACHINED	①	ROUGH CLEANED	ALTERATIONS
▽▽	FINISH MACHINED	⑱	CHAMFERED	
▽▽▽	FINE FINISH MACHINED	①b	BURRS REMOVED	



NOTE

1. FOR UNTOLERANCED DIMENSION REFER DRG.NO.ICF/STD-9-0-001
2. FINISHED COMPONENT SHALL BE THOROUGHLY CLEANED AND APPLIED WITH TWO COATS OF RED OXIDE ZINC CHROMATE PRIMER TO IS:2074/92 TO A DFT OF MINIMUM 35 MICRONS WITH SMOOTH & MATT FINISH.
3. ALTERNATIVELY MATERIAL TO IS:2062-99 Fe 410 WC MAY BE USED.

▲ 20 t AXLE BOGIES FITTED WITH AIR SPRINGS

				32	BRACKET	5x85x110	1		IRS M41-97		SEE NOTE-3				
No. OFF				DESCRIPTION & DIMENSIONS				ITEM	REF.DRG	MATL.SPEC.	WEIGHT/UNIT	REMARKS			
IV	III	II	I	GROUP: BOGIE FRAME ARRGT. (0-3)							SUPERSEDED BY:				
				PER COACH	BRACKET FOR WIRE ROPE ON BOGIE FRAME						SUPERSEDES				
											SCALE		SSE/D	C. Subramanian 02/12	
											1:1		CHD	R. Muralidhar	
													CAD	R. Muralidhar	
					CAD FILE: C:\MD-CAD\199\0-3\523---00.DWG						ALT.				
				▲	DATA CODE NO:	INDIAN RAILWAY STANDARDS				SHEET 1 OF 1					
				199							DMU/DPC5-0-3-523				
ALT.	DATE OF LATEST ALTN	DATE OF FIRST ISSUE	Dy.CME/D	AME/D								INTEGRAL COACH FACTORY CHENNAI - 38			